

A flattering wrap dress and top

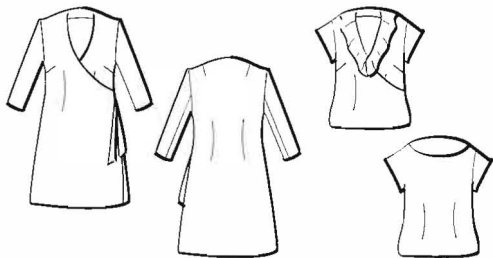
Petite Plus Patterns: Easy Wrap Dress & Top 304

(PetitePlusPatterns.com)

Well-proportioned, this wrap-front dress and tunic is designed for the curvy, petite figure. This pattern includes: a double front to provide maximum coverage, tie closures at the side, set-in cap or bracelet-length sleeves, and an optional flounce along the neckline. The instructions are easy to follow, and with $\frac{3}{8}$ -inch seam allowances, the assembly is fast. Our tester tried this dress on several of her students and said it looked fabulous with good proportions and bust darts in the correct location. Ideal for lightweight woven cotton in solid, prints, and stripes; stretch wool; and stable knits. If the tunic is made without the side ties, a stretch fabric is needed. Depending on the fabric choice, this dress or top easily takes you from the office to dinner out.

(Sized 12-24 for busts 38-50 in. and hips 40-52 in.) + ■

—Tested by Anne Kendall, Seekonk, Massachusetts



SEWING TIP: To add stability, sew bias stay tape along the front edge before attaching the facings.