

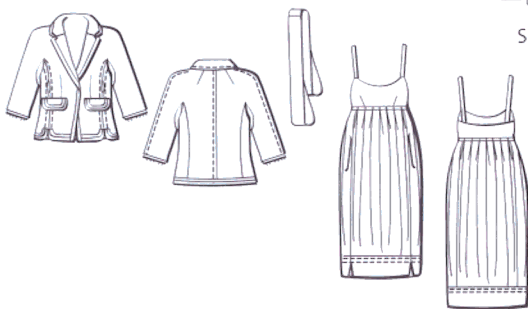
# A pretty, pleated dress and tailored jacket

## Vogue 2942 (VoguePatterns.com)

For a pattern that is rated “average” in skill level, this Vogue Donna Karan Collection pattern requires quite a bit of work and a tremendous amount of accuracy and skill. The lined jacket has many details, including a bias collar, princess seams, inseam pockets and mock flaps, belt carriers, and sheer trim insertions along the hem edge; however, with its empire waist, in-seam pockets, and a shaped wide-banded hem, the bubble-like lined dress is the star. The empire waistline seam also boasts a delicate-looking row of tiny ½-inch pleats.

(Sized Misses’ 6–20 for busts 30.5–42 in. and hips 32.5–44 in.) ▲

—Tested by Anne Kendall,  
Seekonk, Massachusetts



**STYLE TIP:** For goddess-like drape, make this dress in a silk knit (as we did here) or matte jersey. It is striking in a bold print and ethereal in a solid neutral color.



## DRESS AND JACKET: VOGUE 2942

Shoes: Alima, Alima.com; Necklace: W. Culpepper, WendyCulpepper.com; Bag: BCBG, available at select BCBG boutiques; Blouse: French Connection, FrenchConnection.com; Boots: Frye (800-826-FRYE), FryeBoots.com; Clutch: KALE, KALEhandbags.com

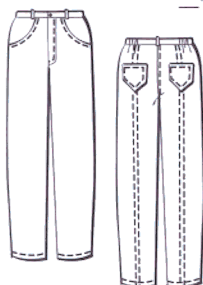
# Straight and sporty jeans

## Petite Plus Patterns – Jeans 605 (PetitePlusPatterns.com)

Our tester highly recommends this stylish jeans/casual pants pattern for its wonderful fitting techniques. Although designed for petite sizes, it’s easy to adjust the pattern to taller sizes. The Perfect Fit Guide included in the instructions also makes altering for a full or flat seat, a full tummy, and baggy-back legs a cinch. What’s more, the back pockets are sized to flatter—without over-emphasizing—the posterior, and the waistband design allows for partial elastic insets. This is a great all-around design for comfort and fit.

(Sized 14–24 for hips 42–52 in.) + ■

**STYLE TIP:** The back seams on these jeans make for a sporty style, just like the designer versions shown on the runways. Break out of the box, and try a fabric with sheen to mimic Balenciaga’s upgraded-cargo-pants look.



—Tested by Fran Godderidge,  
Ogden, Utah

