

GET THE LOOK

BY JESSICA ZIEBARTH

IN SHORT

Recreate a classic workwear look with a twist that transitions easily from summer to fall or from vacation back to work. Make a suit set with the same bold geometric print that works together or as separates. Depending on the color scheme and fabric print, this outfit looks great on all ages.

BLAZER PATTERNS

Look for a pattern that features a higher-neck lapel collar, straight sleeve and hits below the waist.

TIP: Pick a printed fabric that has many elements to it so the print doesn't need to match up.

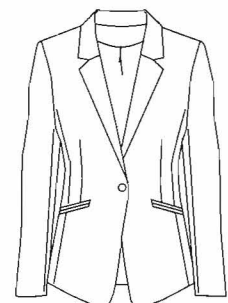
Pattern for
Petites in sizes
12-24!



#202 Princess Seamed Blazer
by Petite Plus Patterns



Vintage Ali Blazer
by BurdaStyle



Blixen Blazer Jacket
by Wardrobe by Me

FABRIC COLOR PALETTE



Blue Teal Salmon Mustard White

FINAL TOUCHES

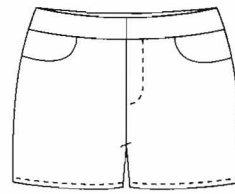
When accessorizing a print suit set, keep simplicity in mind. The matching suit is the statement, and the accessories should be solid tonal colors. Choose one color from the fabric print to coordinate with shoes and purse. For a work-appropriate look, choose a close-toed shoe and structured satchel bag.

SHORT PATTERNS

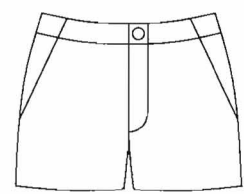
Look for a tailored mid-rise short that's not too short and features minimal pockets.



Emerson Shorts
by True Bias, available
at shopsewitall.com



Maritime Shorts
by Grainline Studio



Chi-Town Chinos
by Alina Sewing
& Design Co.