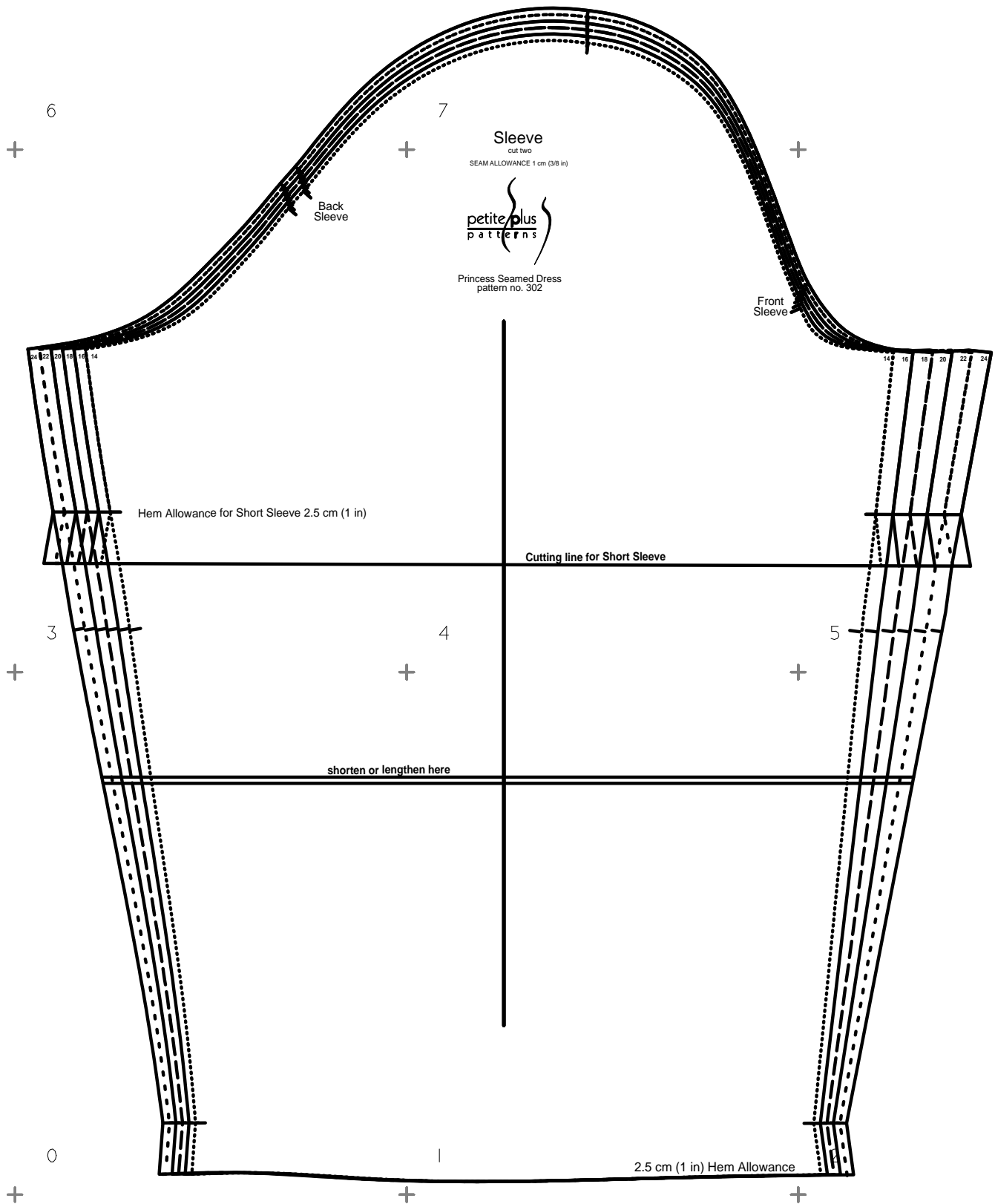


Map



+

+

shorten or lengthen l



+

+

+

+

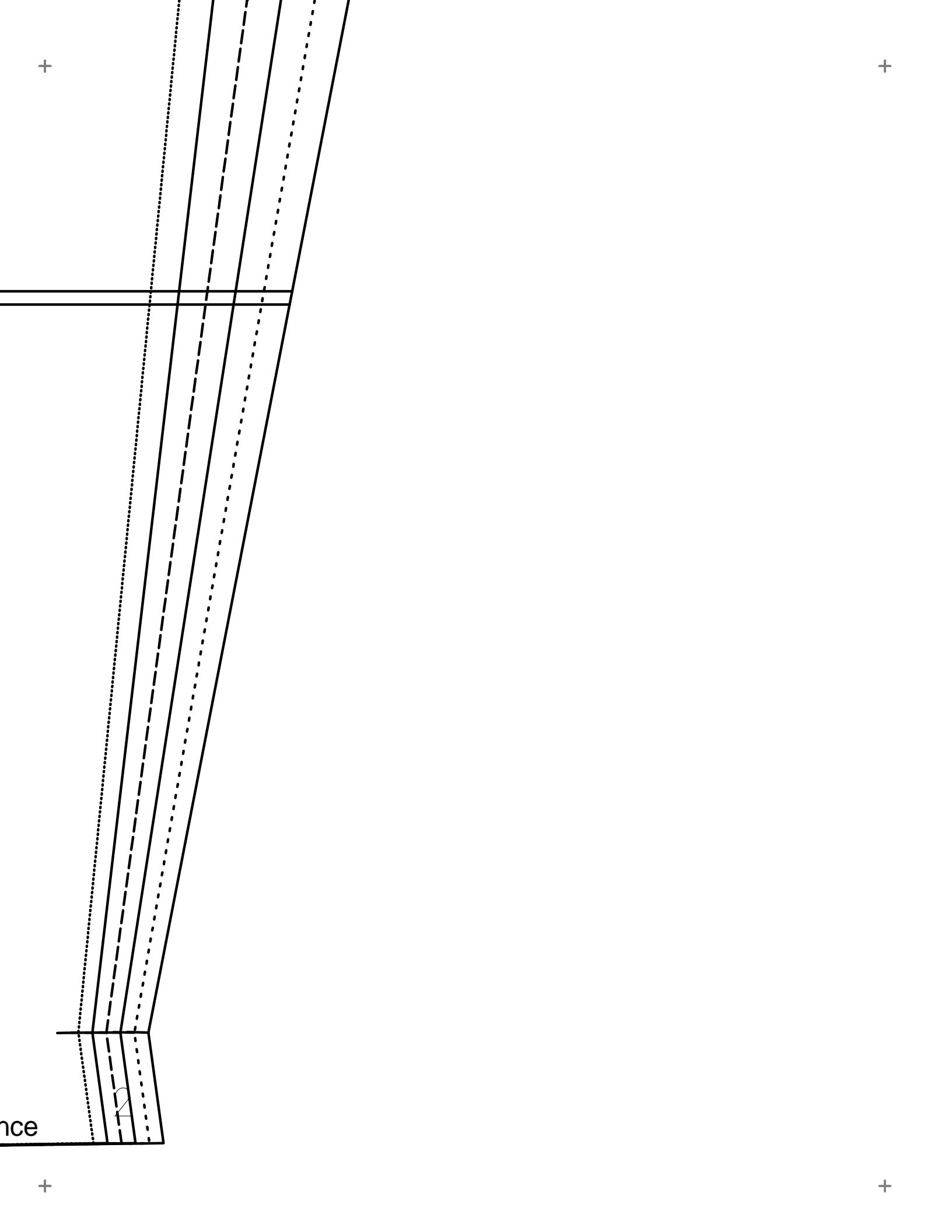
lengthen here

|

2.5 cm (1 in) Hem Allowance

+

+



+

+

Back
Sleeve

24 22 20 18 16 14

Hem Allowance for Short Sleeve 2.5 cm (1 in)

3

+

+

Sleeve

cut two

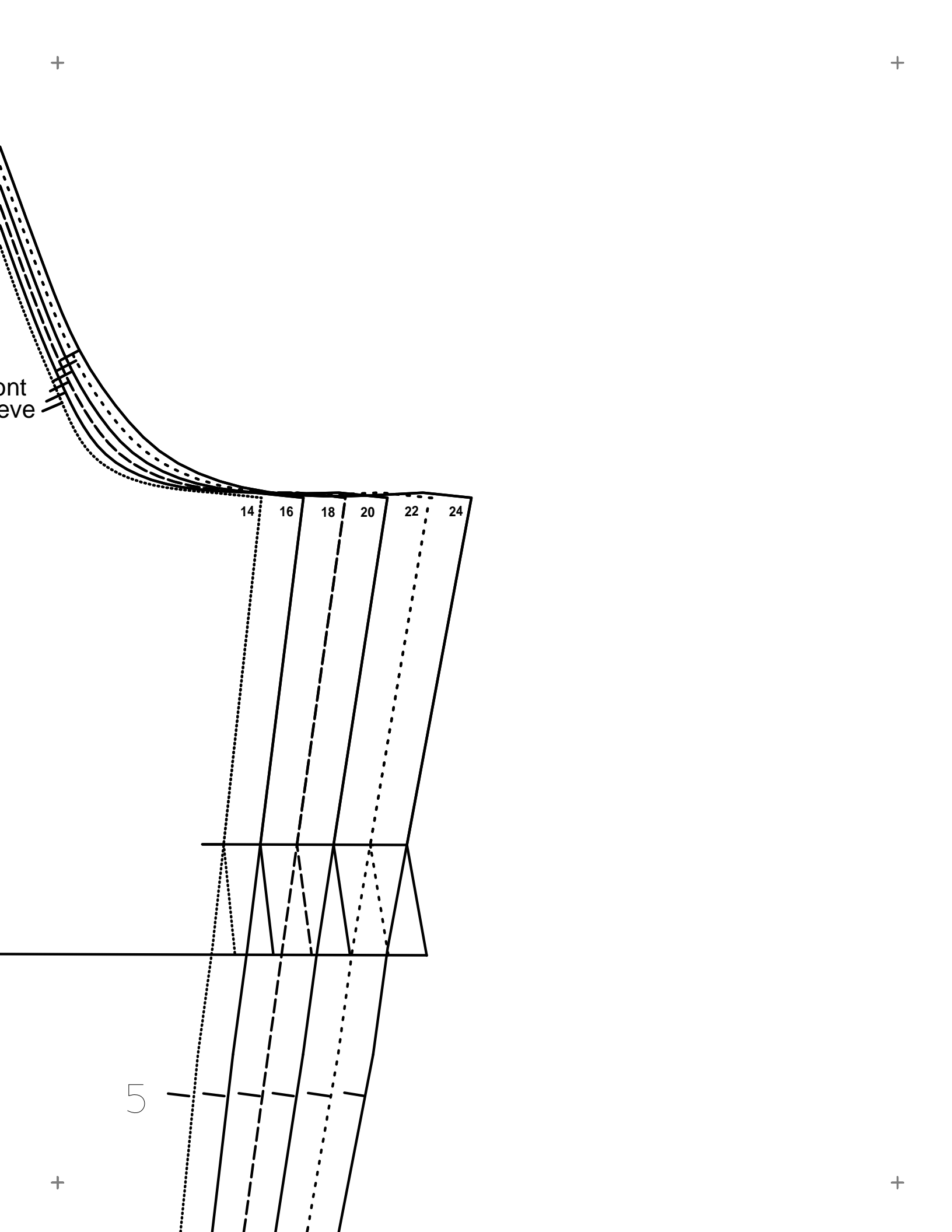
SEAM ALLOWANCE 1 cm (3/8 in)



Princess Seamed Dress
pattern no. 302

Front
Sleeve

Cutting line for Short Sleeve



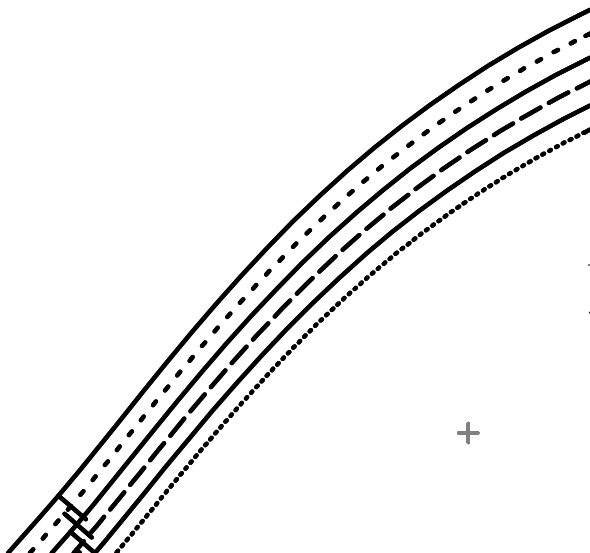
+

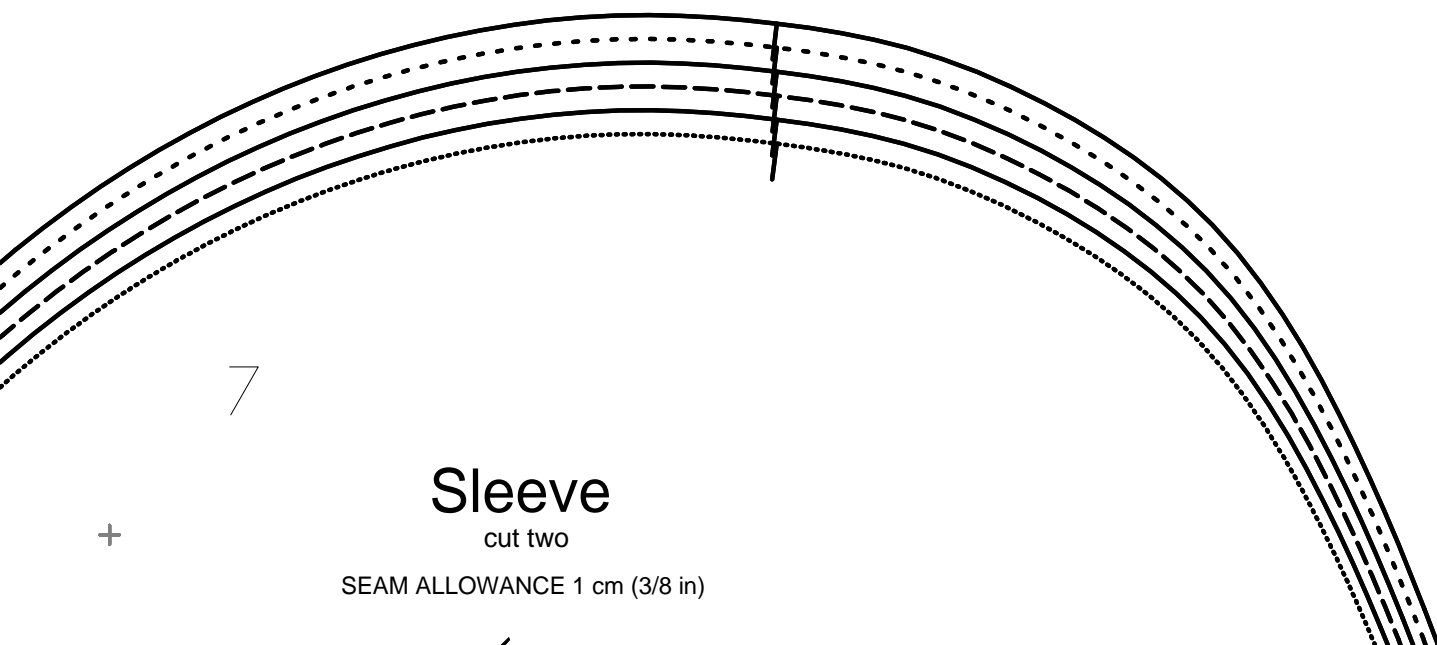
+

6

+

+





7

Sleeve

cut two

SEAM ALLOWANCE 1 cm (3/8 in)