

114 — SHAWL TEE is a two layered top made up of a stretchy, scoop-neck, sleeveless tank with an attached shawl overlay that flows loosely over upper arms, back and tummy.

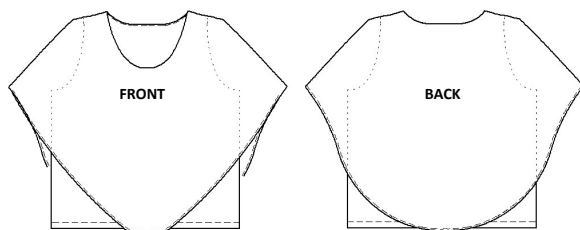
Fabric Requirements						
Shawl	140 cm (54 in)	150 cm (60 in)		Tank	140 cm (54 in)	150 cm (60 in)
12	1.3 m (1 1/2 yd)	1.3 m (1 1/2 yd)		12-20	.75 m (7/8 yd)	.75 m (7/8 yd)
14-22	1.4 m (1 5/8 yd)	1.4 m (1 5/8 yd)		22	1.5 m (1 2/3 yd)	.75 m (7/8 yd)
24	1.5 m (1 2/3 yd)	1.5 m (1 2/3 yd)		24	1.6 m (1 3/4 yd)	1.5 m (1 2/3 yd)
Suggested Fabric: Light to medium-weight sheer fabrics with a soft, fluid hand such as chiffon and georgette.				Suggested Fabric: Light to medium-weight, knit or stretch-woven fabrics with a smooth hand and at least 10% stretch : ITY, ponté, jersey, interlock.		

Notions: Thread, 6 mm (1/4 in) twill tape or clear bathing suit elastic to reinforce shoulder seam of tank. Fine Polyester or Nylon Serger Thread for rolled edge hem.

Sewing Machine Needles: Consult your fabric seller for the best size and type of needle for your fabric.

On our samples, we used: Size 60/8 & 70/10 Microtex for the sheer fabric; Universal 80/12, Stretch & Jersey Ball Point 90/14 for the knit and stretch woven fabric.

SHAWL TEE



Body Measurements	12		14		16		18		20		22		24	
	cm	in	cm	in	cm	in	cm	in	cm	in	cm	in	cm	in
High Bust (Chest)	87	34	92	36	97	38	102	40	107	42	112	44	117	46
Full Bust	97	38	102	40	107	42	112	44	117	46	122	48	127	50
Waist	76	30	81	32	87	34	91.5	36	96.5	38	102	40	107	42
*Tummy	104	41	109	43	114	45	119	47	125	49	130	51	135	53
**Hip	102	40	107	42	112	44	117	46	122	48	127	50	132	52
Back Waist Length	35.9	14 1/8	36.2	14 1/4	36.5	14 3/8	36.8	14 1/2	37.1	14 5/8	37.4	14 3/4	37.8	14 7/8
Back Shoulder Width	35.8	14 1/4	36.6	14 1/2	37.4	14 3/4	38	15	38.6	15 1/4	39.2	15 1/2	40	15 3/4

Size Information: This multi-sized pattern is designed for a full-figured, 5' 2" woman with narrow shoulders, **D cup** bust and rounded tummy. For the best fit in shoulders and neckline, choose your size based on your High Bust measurement. Instructions for smaller & fuller busts and other common fitting issues can be found in *The Perfect Fit Guide* online at www.petitepluspatterns.com *tummy measured 11 cm (4 1/2 in) from waist. ** hip measured 20 cm (8 in) from waist.

Garment Length	cm	in
Measurements are rounded to nearest full number.		
Center Front from Neck to Hem	48	19
Center Back from Neck to Hem	60.5	24

Seam Allowances: 1 cm (3/8 in) unless otherwise indicated on the pattern piece or in guide.

This is a FAST Cut & Sew PROJECT